

Eclipse BoostPak

Packaged Gas Booster Systems

Series MR

Version 2

Medium Flow Simplex with Recirculation Loop

Parameter	Specification						
	MR3314	MR3412	MR4414	MR4617	MR4619	MR4623	MR4628
Assembly Number	10024860	10024861	10024862	10024863	10024864	10024865	10024866
Booster	HB3314-1/2	HB3412-1/2	HB4414-1	HB4617-1	HB4619-2	HB4623-5	HB4628-5
Minimum Flow (cfh) ^a	750	1700	3000	4600	3600	11,000	4900
Maximum Flow (cfh) ^a	5300	11,600	20,400	23,000	17,800	33,000	14,600
Pressure Boost ^a	9	7	7	13	18	26	34
Turndown	7:1	7:1	7:1	5:1	5:1	3:1	3:1
Primary Voltage	b,c,d,e	b,c,d,e	c,d	c,d	c,d	c,d	c,d
Motor Horsepower	1/2	1/2	1	1	2	5	5
Approximate Weight (Lbs.)	670	700	790	980	1,080	1,300	1,450

Notes: a Ratings are nominal, in CFH of natural gas, at standard conditions and depend on customer interface piping.
b 115/230 VAC, 1 ϕ , 60hz
c 230/460 VAC, 3 ϕ , 60hz
d 208 VAC, 3 ϕ , 60hz
e 208 VAC, 1 ϕ , 60hz
NEMA 12 rating; NEMA 7 rating option available (footprint increases with this option)

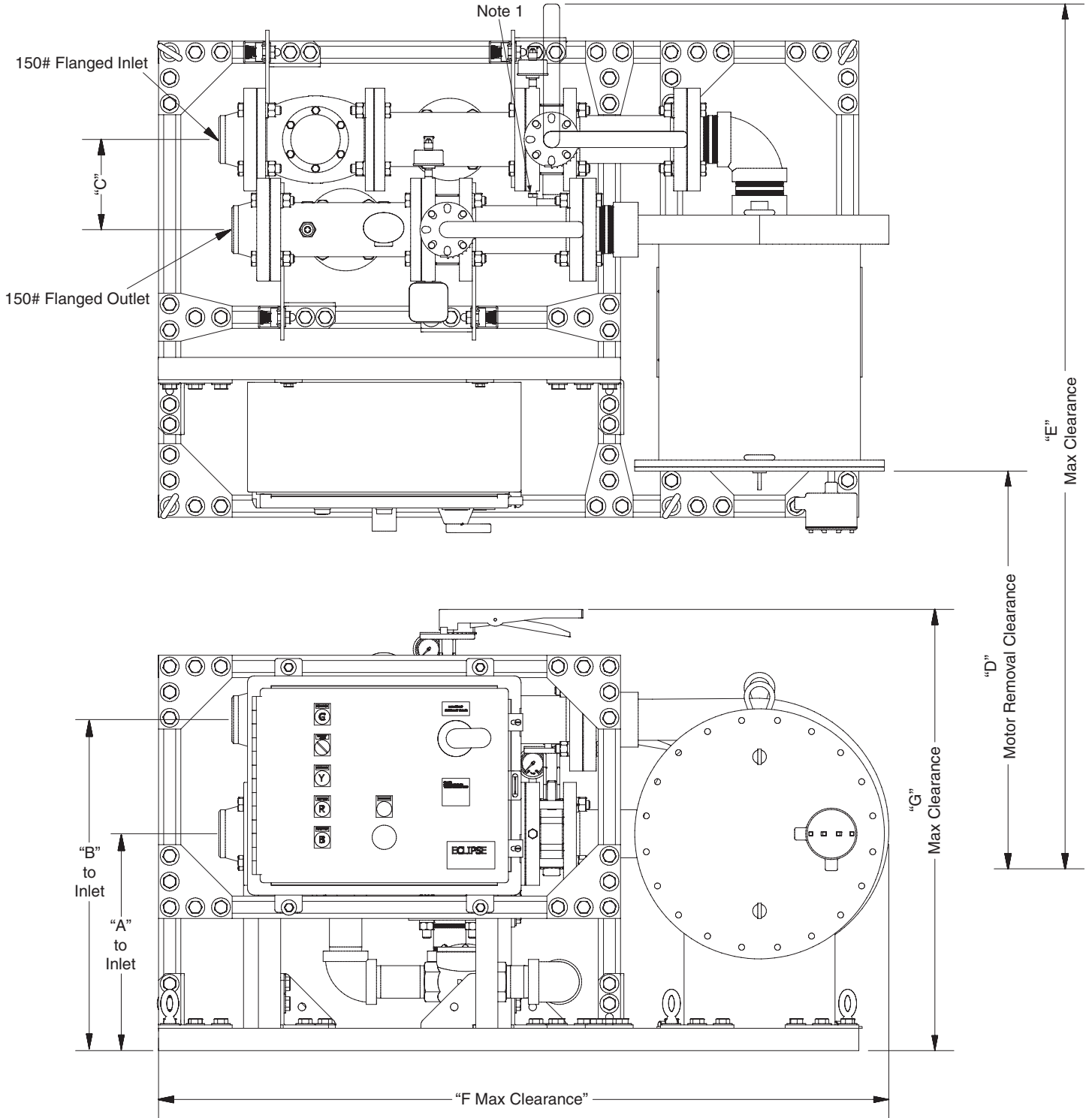
Dimensional Information [mm (in)]

BoostPak	Flange sizes (150#)		Connection Data		
	Inlet	Outlet	A	B	C
MR3314	3	3	402 (15.8)	613 (24.1)	167 (6.6)
MR3412	4	3	364 (14.3)	553 (21.8)	224 (8.8)
MR4414	4	4	402 (15.8)	613 (24.1)	203 (8)
MR4617	6	4	435 (17.1)	684 (26.9)	307 (12.1)
MR4619	6	4	524 (20.6)	822 (32.4)	308 (12.1)
MR4623	6	4	549 (21.6)	895 (35.3)	322 (12.7)
MR4628	6	4	625 (24.6)	1054 (41.5)	316 (12.4)

BoostPak	Maximum Envelope			
	D	E	F	G
MR3314	737 (29)	1603 (63.1)	1356 (53.4)	818 (32.2)
MR3412	762 (30)	1700 (66.9)	1526 (60.1)	758 (29.8)
MR4414	762 (30)	1664 (65.5)	1531 (60.3)	837 (23.9)
MR4617	762 (30)	1773 (69.8)	1836 (72.3)	907 (35.7)
MR4619	711 (28)	1683 (66.3)	1890 (74.4)	1046 (41.2)
MR4623	889 (35)	2027 (79.8)	1946 (76.6)	1119 (44)
MR4628	965 (38)	2162 (85.1)	2027 (79.8)	1277 (50.3)

Note: All dimensions are approximate.

Dimensions Medium Flow Simplex with Recirculation Loop



Note 1 Pressure Switch Kit location when factory mounted.
Note 2 When Pressure Switch Kit is supplied loose, it shall
 it shall be installed in accordance with local codes.



Offered By:

Power Equipment Company
2011 Williamsburg Road
Richmond, Virginia 23231
Phone (804) 236-3800
Fax (804) 236-3882

www.peconet.com